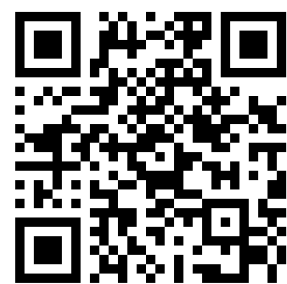




JOIN THE HUNT AT IRVINE

GEOCACHING



Irvine
NATURE CENTER

EXPLORENATURE.ORG

WHAT IS GEOCACHING?

Geocaching is a real-world, outdoor adventure that is happening all the time, all around the world. To play, participants use the Geocaching app and/or a GPS device to navigate to clearly hidden containers called geocaches.

HOW TO CACHE:

1. Download the Geocaching App or use your smartphone GPS
2. Log in or create an account on your app or at www.Geocaching.com
3. Find the Irvine Geocaches using your smartphone or GPS device
4. Log your find to www.Geocaching.com

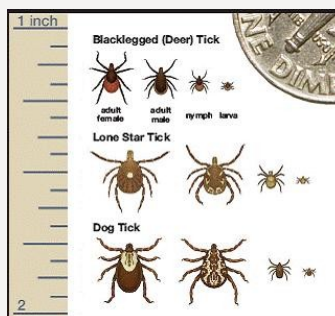
WHAT DO CACHES LOOK LIKE?



Each "cache" is a small, sealed box containing a log book, a stamp, and trinkets that can be traded. When you find a cache, open the box, log your find in the book, trade a trinket, and return the cache to the place you found it for the next person to find. If a cache is lost or damaged, please bring it to the attention of the front desk.

GEOCACHING SAFETY:

- Be aware of seasonal weather and dress appropriately. In the summer, please bring water to stay safe and hydrated while you hike.
- Ticks are a natural part of the landscape in the late spring, summer and early autumn. Please be aware of ticks, dress in appropriate clothing, and check yourself and your loved ones for ticks once you return from the trails.
- Poison Ivy can be found in our forests. Learn to spot this itchy plant and stay on the trails.



HOURS OF OPERATION: TUESDAY-SUNDAY 9AM-5PM

11201 GARRISON FOREST ROAD | OWINGS MILLS, MD 21117

GEOCACHES

IRVINE'S



Start your hunt by downloading the Geocaching App or turning on your GPS device. Use your smartphone or GPS and input the cache location you wish to find. Let the games begin!

COORDINATES OF IRVINE'S CACHES:

GEOCACHE NAME: **COORDINATES:** **DIFFICULTY EXPLAINED:**

THROUGH THE GARDEN GATE	N 39° 25.972 W 076° 45.692	A great find for all ages!
NATIVE VILLAGE	N 39° 25.895 W 076° 45.476	Slightly longer hike; easily accessible from trails.
THREE FROGS, TWO TOADS, ONE NEWT	N 39° 26.251 W 076° 45.436	Long hike; potential muddy conditions.
THE KESTREL	N 39° 25.718 W 076° 45.455	Second-longest hike; a great adventure!
OUT IN LEFT FIELD	N 39° 26.310 W 076° 45.219	Our longest hike; best for adults and seasoned hikers.

LEVEL OF DIFFICULTY:

GREEN= EASY

YELLOW= INTERMEDIATE

RED= DIFFICULT



HOURS OF OPERATION: TUESDAY-SUNDAY 9AM-5PM
11201 GARRISON FOREST ROAD | OWINGS MILLS, MD 21117

 **Irvine**
NATURE CENTER

EXPLORENATURE.ORG